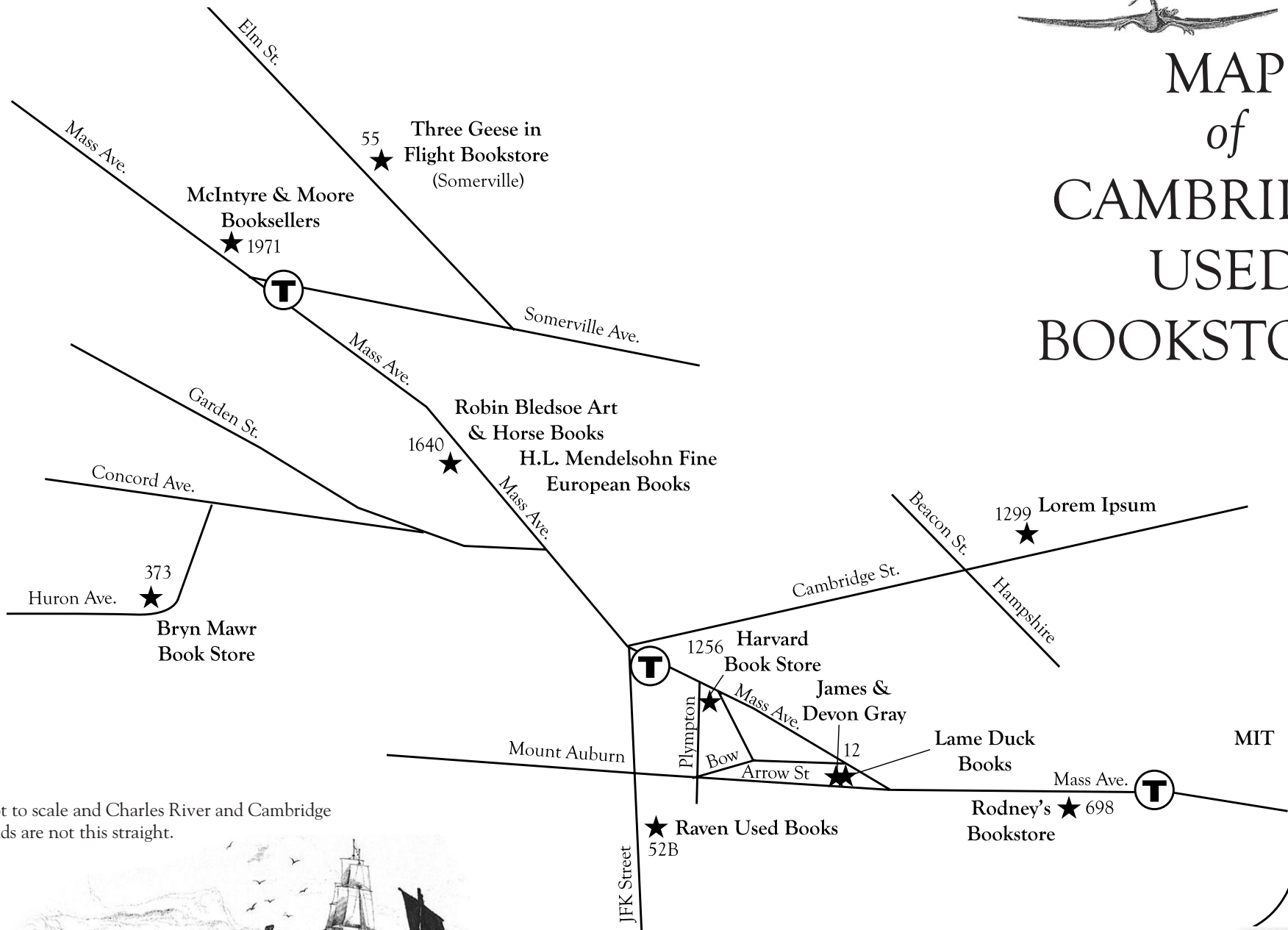




MAP of CAMBRIDGE USED BOOKSTORES

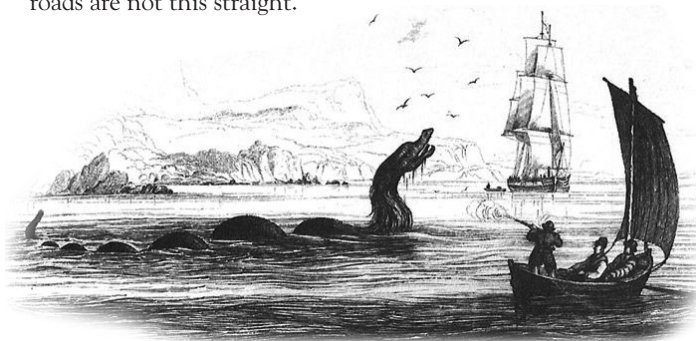


Not to scale and Charles River and Cambridge roads are not this straight.

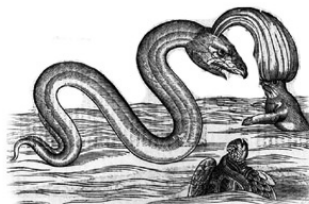
CHARLES RIVER



Abraham Ortelius 1603

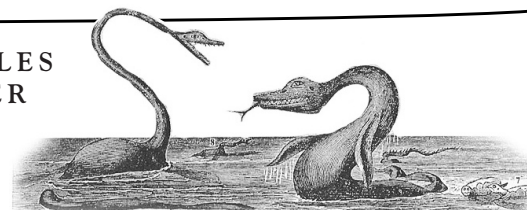


Bishop Erik Ludvigsen Pontoppidan, 1755

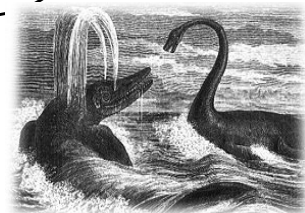


Ulisse Aldrovandi, 1638

CHARLES RIVER



W.E. Webb, 1872



Louis Figuier, 1863